

NOMADE.

MODULAR RESORTS & GLAMPING HOUSES



1
SUCH AN
OFFER ON THE
MARKET

5
YEAR
WARRANTY

50
CONFIGURATIONS

LUNETATM
BROCHURE & PRICE LIST

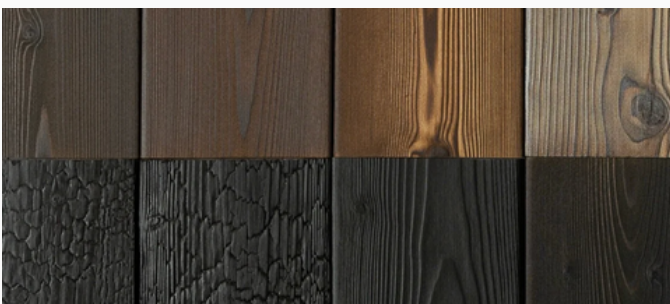
ATEPAA'BUILDINGS

Look Book.

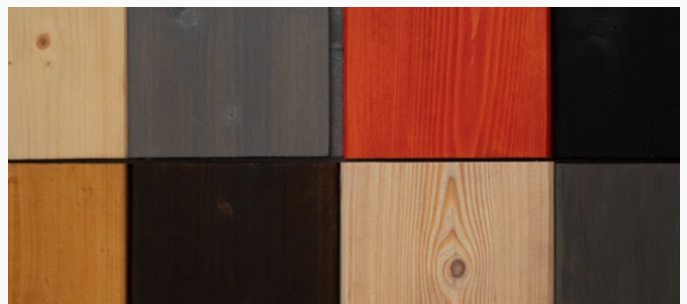


Exterior Finishes & Cladding Options.

Unique design, ecological materials, and comfortable interiors – engineered for all climates. Our modular homes are built to perform in any environment, from the freezing north to the sun-soaked south, ensuring durability, comfort, and beauty wherever you place them.



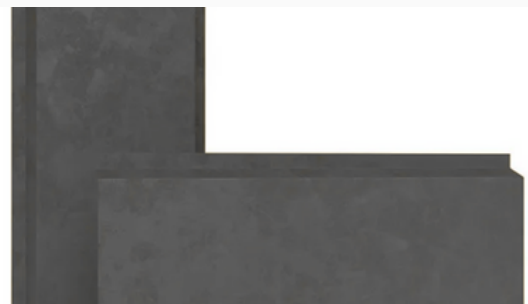
Charred wood cladding (Shou Sugi Ban)



Lacquered wood cladding



Corten steel panels



Powder-coated steel panels

Not Require Building Permits.

The LUNETATM modular homes are mobile structures that are not classified as buildings under building law. This means they do not require a building permit, which is a significant advantage for those looking for flexible and quick solutions. By using this type of structure, users can implement their plans without the burden of formalities typically associated with traditional construction.

LUNETATM Modular Homes – Mobile Structures That Do Not Require a Building Permit

NATURA modular homes are modern, mobile structures that fully meet the needs of individuals seeking functional, comfortable spaces for year-round use, without the need for a building permit. Due to their design and characteristics, LUNETATM homes are not considered buildings under building law, making them an ideal solution for those who want to avoid the complicated administrative procedures associated with the construction of traditional buildings.

No Need for a Building Permit

LUNETATM modular homes are designed as mobile structures that can easily be moved and placed on various plots of land. Since they are not buildings in the traditional sense, they are not subject to building regulations, meaning they do not require a building permit or any complicated formalities. This mobility and flexibility allow homeowners to quickly execute their plans, avoiding many administrative hurdles.

Mobility and Flexibility

LUNETATM modular homes can be easily relocated, adapting to the changing needs of users. They can be used on recreational plots, as tourist accommodations, offices, or even as comfortable residences in places where traditional buildings may require permits. This is a perfect solution for those seeking usable space in locations where other construction investments might be limited by legal regulations.

Simplicity and Speed of Implementation

The construction of a LUNETATM modular home is much faster than traditional home construction, as it does not require lengthy procedures related to obtaining permits, designing, or building. The installation process is quick and simple – after purchasing the unit, all that is needed is a suitable location, utility connections, and the space is ready. This makes it an excellent alternative for individuals who wish to quickly gain residential or usable space without unnecessary formalities.

Interior Design Styles.

At Nomade House, every interior is designed to reflect your lifestyle and the surrounding landscape. We offer a curated selection of signature interior styles, each crafted with premium materials, timeless aesthetics, and exceptional attention to detail.



Sun

A cozy and elegant atmosphere defined by beige tones, natural wood textures, and minimalist forms. The WARM style brings a sense of calm and harmony — perfect for those who value simplicity, balance, and comfort.



Raw

Modern yet organic — the RAW style combines contemporary design with raw materials like concrete, steel, and natural wood. It creates an authentic, refined space that feels both industrial and inviting.



Folk

Inspired by mountain lodges and traditional craftsmanship, the FOLK interior blends natural textures, warm fabrics, and regional character. Designed to feel timeless and genuine,

Interior Details.

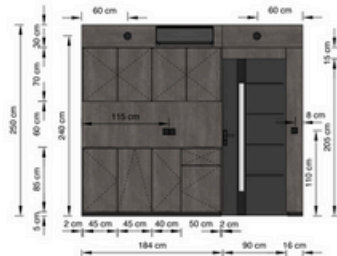
At Nomade House, every interior is designed to reflect your lifestyle and the surrounding landscape. We offer a curated selection of signature interior styles, each crafted with premium materials, timeless aesthetics, and exceptional attention to detail.



Wall Systems & Construction Details

Explore the structural layouts of our modular houses — detailed wall compositions, materials, and dimensions that define NOMADE's precision, insulation, and timeless design.

Living Room



LIVING ROOM AND KITCHEN | WALL SECTION 1



LIVING ROOM AND KITCHEN | WALL SECTION 2

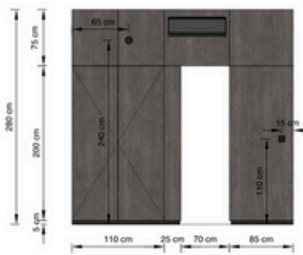


LIVING ROOM AND KITCHEN | WALL SECTION 3



LIVING ROOM AND KITCHEN | WALL SECTION 4

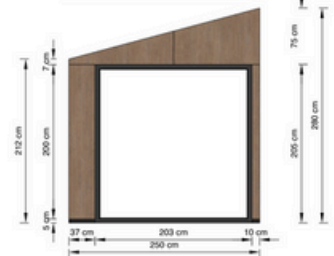
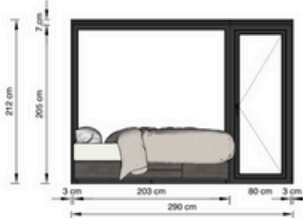
Bedroom



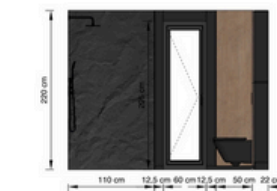
BEDROOM | WALL SECTION 1



BEDROOM | WALL SECTION 2



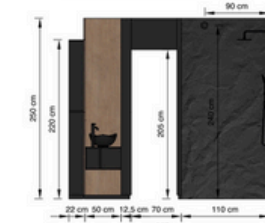
Shower & Toilet Room



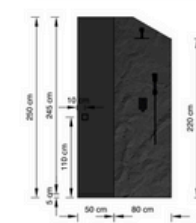
BATHROOM | WALL SECTION 1



BATHROOM | WALL SECTION 2



BATHROOM | WALL SECTION 3



BATHROOM | WALL SECTION 4

Flexibility of Installation-Dismantling.

Our modules offers a spacious, modern dining hall, ideal for meal organization, and a spacious playground providing children with a place for activity and relaxation. Thanks to its modular construction, the building can be easily expanded and adjusted to changing needs. The mobile unit is delivered to the site using a specialized vehicle with a crane, ensuring precise placement at the designated location. Due to its modular design, it can also be easily relocated to another site without the need for dismantling its structure or equipment.

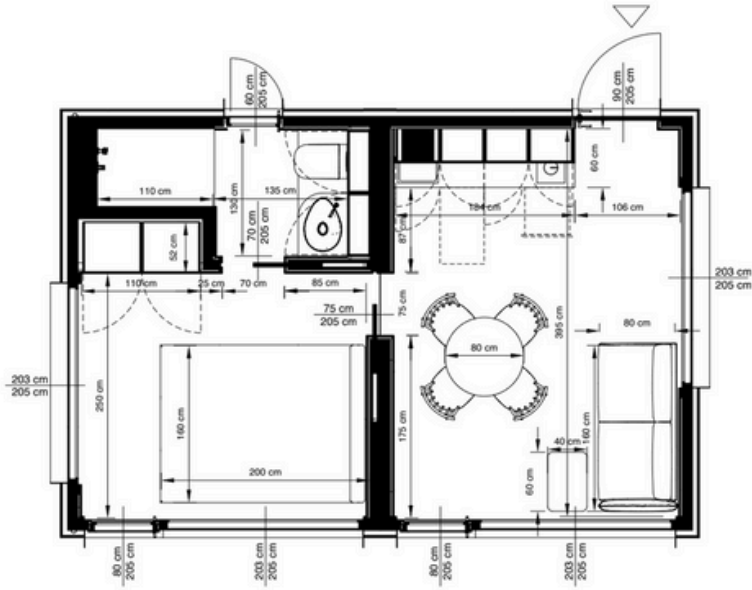


Types of Modular Models

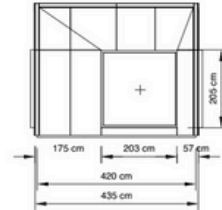
Discover the flexibility of NOMADE's hybrid modular architecture, where design meets functionality. Each model is crafted to adapt to your lifestyle — from compact retreats to expansive, nature-inspired villas.

LUNETATA™ M2

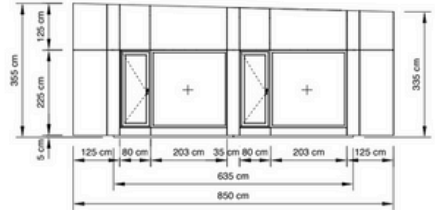
A two-module home featuring a spacious living room with kitchen and a private bedroom with en-suite bathroom. Perfect for couples or as an intimate holiday retreat.



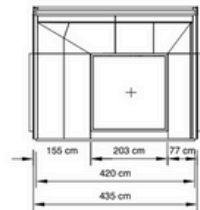
NOMADE | FLOOR PLAN M2



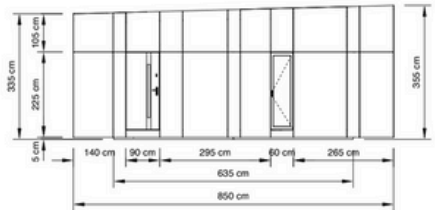
LUNETATA M2 | FRONT ELEVATION



LUNETATA M2 | SIDE A ELEVATION



LUNETATA M2 | BACK ELEVATION

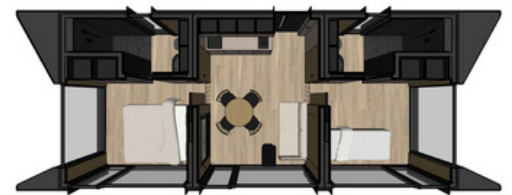
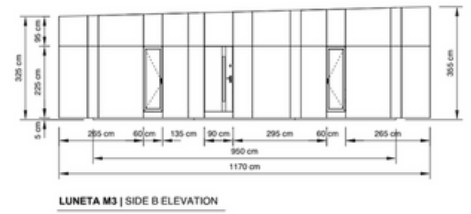
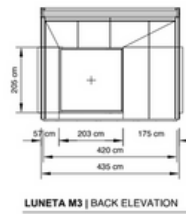
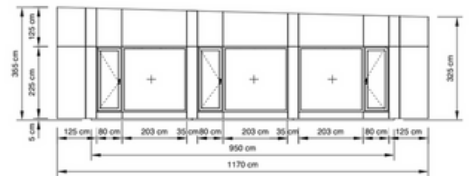
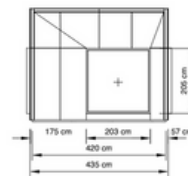
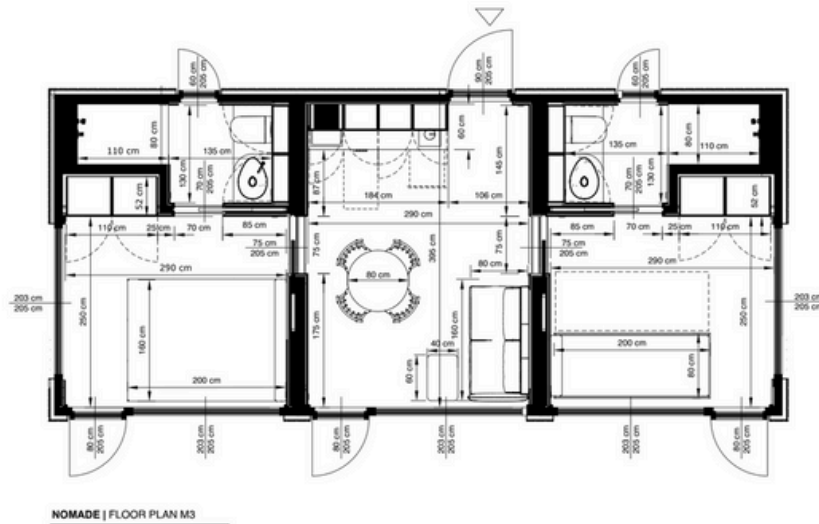


LUNETATA M2 | SIDE B ELEVATION



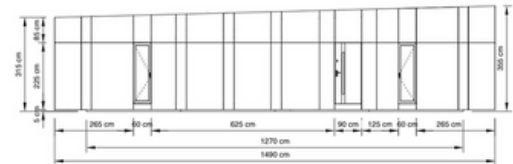
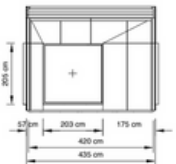
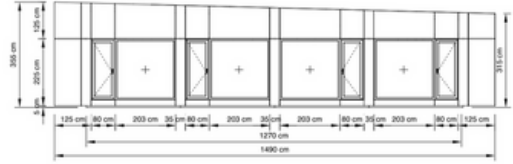
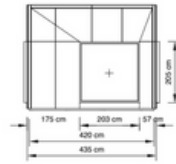
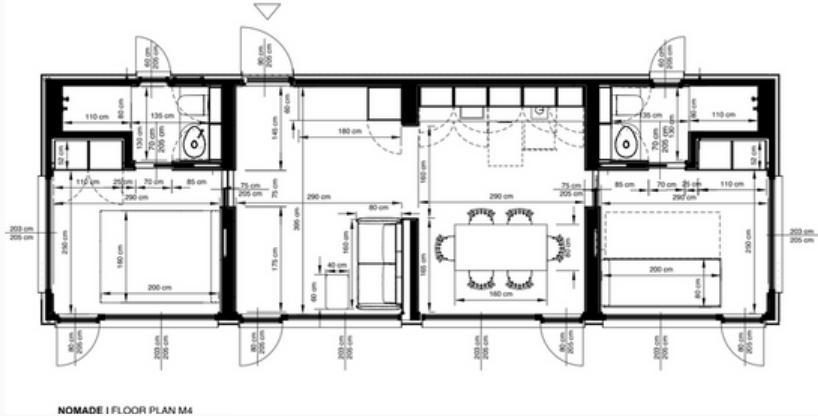
LUNETA™ M3

A three-module home with a bright living area, kitchen, and two bedrooms — each with its own bathroom. Comfort and privacy in perfect harmony with nature.



LUNETATA™ M4

A four-module home with a double living room and kitchen, plus two generous bedrooms with en-suite bathrooms. Designed for full relaxation and breathtaking panoramic views.



Price List 2025

Base Price Includes:

| | |
|---|-------|
| <p>Structure made of galvanized steel profiles:</p> <ul style="list-style-type: none">• 120x60 mm – main profiles• 60x30 mm – secondary profiles <p>Steel frame protected from the ground with an EPDM membrane providing insulation from moisture. Thermal and acoustic insulation: mineral wool. Floor board: 22 mm OSB.</p> | INCL. |
| <p>Wall structure made of certified KVH timber. External structural board: MFP/OSB 15 mm. Wall infill with thermal and acoustic mineral wool insulation, 100 mm thickness Vapor barrier foil protecting walls and slabs against moisture penetration. Interior finishing board: 18 mm decorative melamine-faced chipboard (MFC) by Egger (available in plain colours or wood decors). – Other manufacturers or custom decors available on request.</p> | INCL. |
| <p>Wall structure made of certified KVH timber. Wall infill with thermal and acoustic mineral wool insulation, 100 mm thickness ($\lambda = 0.037$). Vapor barrier foil protecting walls and slabs against moisture penetration. Interior (both sides) finishing board: 18 mm decorative melamine-faced chipboard (MFC) by Egger (available in plain colours or wood decors). – Other manufacturers or custom decors available on request.</p> | INCL. |
| <p>Structure made of certified KVH timber. Thermal and acoustic insulation: 100 mm mineral wool. External roof covering: coated galvanized steel sheet in RAL colour. Interior ceiling finish: 18 mm decorative melamine-faced board by Egger, available in wood decors or plain colours.</p> | INCL. |
| <p>Windows and doors joinery PVC joinery system Aluplast Ideal 8000, colour options: white, anthracite or black included in price. Other colours available on request. Roviera line: decorative arched windows. Tilt-and-turn windows with threshold. Additional UV-protective glass layer: optional, extra charge. Mosquito nets: optional. Lockable handles with key: optional. Internal blinds: optional. Color RAL - TBC</p> | INCL. |
| <p>Doors: Full Steel doors in RAL colour, installed at the rear in the kitchen-living module, equipped with lock. Preparation for electronic lock: to be agreed (optional). Color RAL. - TBC</p> | INCL. |
| <p>External decoration façade: *Wooden cladding: Charred wood (4 variants) / Painted wood (4 colour variants) *Powder-coated steel panels</p> | INCL. |

Base Price Includes:

| | |
|---|-------|
| Electrical installation Complete electrical system according to project requirements. Ceiling downlight (LED). Switches and sockets by Kontakt Simon. Decorative lighting (pendant lamps, wall lamps, table lamps) – optional, agreed at the interior design stage. One exterior LED wall light – standard, installed at the entrance. | INCL. |
| Plumbing installation Water supply and sewage installation prepared for full functionality. Washbasin, shower tray and fittings by ROCA. Kitchen tap and sink by Franke. | INCL. |
| Heating One energy-efficient electric heater installed in each room – infrared panel with electronic thermostat and Wi-Fi control, 1500W. | INCL. |

Base Price Excludes:

| | | |
|--|--------|------------|
| Air conditioning systems (split) | OPTION | + 1300e/pc |
| Wooden external terraces M2(2x) | OPTION | + 2300e |
| Wooden external terraces M3(3x) | OPTION | + 4600e |
| Custom interior design solutions | OPTION | |
| Personalized facade and roofing finishes | OPTION | |
| Autonomous systems (solar panels, water tanks, eco-friendly solutions) | OPTION | |
| Wooden windows with a triple-glazed package | OPTION | |

LUNETETA™ Pricing.

Price list for the most popular models. If you are interested in a wider range of options and a detailed quote, feel free to contact us.

| NAME | STANDARD | QUANTITY | PRICE (EURO - NET PRICE) |
|----------------------|----------------|----------|----------------------------|
| LUNETETA™ House / M2 | Fully Equipped | 1 | 66 000,00 |
| LUNETETA™ House / M2 | Fully Equipped | 2-10 | 60 000,00 |
| LUNETETA™ House / M2 | Fully Equipped | 11-20 | 55 000,00 |
| LUNETETA™ House / M2 | Fully Equipped | 21+ | 49 000,00 |

| NAME | STANDARD | QUANTITY | PRICE (EURO - NET PRICE) |
|----------------------|----------------|----------|----------------------------|
| LUNETETA™ House / M3 | Fully Equipped | 1 | 86 000,00 |
| LUNETETA™ House / M3 | Fully Equipped | 2-3 | 78 000,00 |
| LUNETETA™ House / M3 | Fully Equipped | 4-8 | 72 000,00 |
| LUNETETA™ House / M3 | Fully Equipped | 9-15 | 68 000,00 |

| NAME | STANDARD | QUANTITY | PRICE (EURO - NET PRICE) |
|----------------------|----------------|----------|----------------------------|
| LUNETETA™ House / M4 | Fully Equipped | 1 | 105 000,00 |
| LUNETETA™ House / M4 | Fully Equipped | 2-3 | 97 000,00 |
| LUNETETA™ House / M4 | Fully Equipped | 4-8 | 92 000,00 |
| LUNETETA™ House / M4 | Fully Equipped | 9-15 | 88 000,00 |

NATURA™ Pricing Information

General Terms & Conditions:

- The pricing is valid until June 1, 2025.
- The manufacturer reserves the right to change prices without prior notice.
- Any discounts listed in the price list may be temporary, and the manufacturer reserves the right to modify or remove them at any time.
- The prices stated in the table include only the listed standard features. Additional options and customizations are available at an extra cost.
- For a personalized price quote, please contact our office at buildings@atepaa.co.
- Prices are stated in EUR, excluding VAT and any additional costs.
- Prices do not include shipping, dedicated transport, or installation services.

For more details or a customized offer, feel free to reach out!

NOMADE.
RESORTS MOBILE & GLAMPING HOUSES



NOMADE.

ul. Wędrowców 112, 43-300 Bielsko-Biała, Poland
info@nomadehouse.com | www.nomadehouse.com

www.atepaa.com | www.buidlings.atepaa.com